

MODEL: BS384V1

SMT PICK & PLACE MACHINE



SUMMARY

- High Accuracy and high Flexibility for 01005, 0201, 0402, 0603, SOIC, PLCC, BGA, μ BGA, CSP, QFP, up to fine-pitch 0.3mm
- Non-contact Linear Encoder System for high Repeatability and Stability
- Smart Feeder System provides Automatic feeder Position Checking, Automatic Component Counting, Production Data Traceability
- Perfect for small & medium volume Production
- COGNEX® Alignment System "Vision on the Fly"
- Bottom Vision Alignment System for fine pitch QFP & BGA
- Built in Camera System with Auto Smart Fiducial Mark Learning
- Dispenser System
- Vision Inspection before and after Production
- Windows 2000 Software
- Universal CAD Conversion
- Placement rate: 4000 CP/H
- Ball Screw Systems in X- and Y-Axes
- Suitable for 128 intelligent Auto Tape Feeder

The SMT Pick & Place Machines of BS384-series were especially designed for small and medium volume batch sizes. BS384-series work very stable and precise, for components 01005, 0201 and μ BGA up to fine pitch 0.3mm. Various models are provided for different applications.

BS384 is fully compatible with BS391- and BA683- series and even the feeders are interchangeable. By this means most reliability and easy maintenance for all models is guaranteed. Preloaded Ball Screws with closed loop Servo Motor system provides high Repeatability and Stability.

Additionally, the BS384-series feature COGNEX vision processing and head-mounted for non-contact "Vision on the Fly" alignment.

MODEL: BS384V1
SMT PICK & PLACE MACHINE

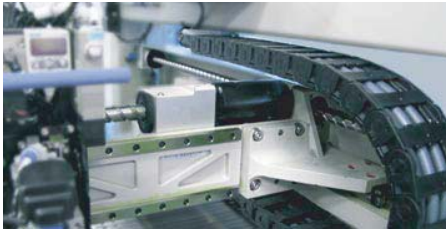


AUTOTRONIK-SMT GmbH
Sulzbacher Str. 111
92224 Amberg, Germany
tel +49 (0) 9621-600 691
fax +49 (0) 9621-600 692
mail office@autotronik-smt.com
www.autotronik.de

DETAILS

Strong and rigid mechanical design

BS384 using welded steel frame which guaranteed a strong and rigid mechanical design. Preloaded Ball Screws with Servo Motor system provides high Speed, Repeatability and Stability.

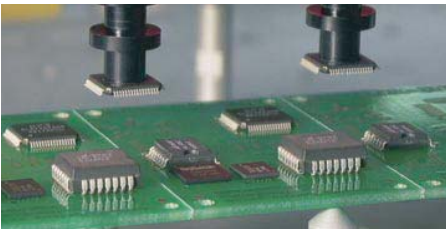


Non-contact Linear Encoder System

By using „Closed Loop“ Servo Motors with non-contact Linear Encoder System, provide extremely high Repeatability and Stability.

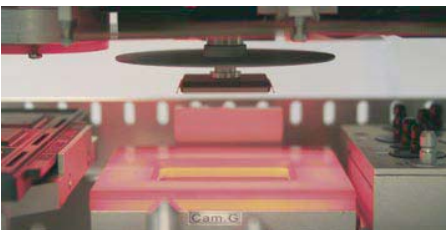
COGNEX® Alignment System "Vision on the Fly"

The BS384-series feature COGNEX® vision processing and head-mounted for non-contact "Vision on the Fly" alignment. The machine BS384 assures high-precision placement of the full range of SMDs, from the smallest 0201 devices through CSPs, µBGAs, flip-chips, ultra-fine pitch 0.3mm for QFPs, even odd-form components.



Bottom Vision Alignment System (option)

A Bottom Vision Camera is used for large components up to 150 x 100 mm and devices with alignment features on their bottom side. Due to additional Bottom Vision Camera, the alignment of 01005 components is guaranteed.



Dispenser System

Optional stand alone dispenser head for adhesive & solder paste dispensing. Perfect for quick, small volume production without making stencil.

Smart Fiducial System

Beside the standard fiducial mark, either square SMD PCB pad or plate-through hole also can be trained as fiducial mark. For more precise placement of fine pitch components, additional Local fiducial recognition is provided.

Universal CAD Conversion

Beside the direct input of data by teach-in camera, an optional CAD conversion program is available for directly transfer of CAD generated pick and place data.

Auto Tape Feeder (KFTA)

The innovative design of KFTA feeder bases and mounting hardware allows almost limitless flexibility in feeder combinations and arrangement schemes, as almost every feeder can be ordered, loaded, programmed and mounted independently. KFTAs are available from 8 mm up to 72 mm tape width.



Feeder Rack (FR-32K)

FR-32K is suitable for 32 x 8 mm KFTA Feeders or for 30 x 8 mm IC-Sticks (1x KFTB-2 / 1x KFTB-4).

Conveyor System

The optional conveyor system with SMEMA Interface and motor-driven-width-control speeds up the handling of PCB and in-line production.



Universal IC Tube Feeder

KFTB universal tube feeder combines vibration driven technique. It is able to handle IC-Sticks with max. 50 mm width.

KFTB-2 (10 pcs of 8 mm IC-Sticks)

KFTB-4 (20 pcs of 8 mm IC-Sticks)



Buffering Nozzle

The spring buffering design of Nozzle adjust the placement pressure for different heights of components automatically.

Vision Inspection

With the built-in software, the camera can automatically move and display the image in the computer screen. User can manually check the printing accuracy of solder paste, quality of the soldering, accuracy of component placement, etc...

Remote Service Kit

Optional Remote Service Kit allows a remote access to machine by Internet, so that programming, calibration and service can be done by our worldwide remote service center.

SPECIFICATION

- Number of Heads (Vision on the Fly): BS384V1: 1
- Placement rate (under the optimum condition): BS384V1: 4000 CP/H, 3300 CP/H (IPC 9850)
- Feeder capacity (8 mm) without conveyor: up to 128 Tape Feeders
- Feeder capacity (8 mm) with conveyor: up to 64 Tape Feeders
- IC Tray capacity: up to 2 Waffle Trays
- Component Sense: Vision detection
- Component Sizes
Handled by head camera:
 - Smallest: 0.6 x 0.3 mm
 - Largest: 16 x 14 mmHandled by fixed Bottom Vision Camera:
 - Smallest: 0.4 x 0.2 mm (option)
 - Largest: 150 x 100 mm (option)
- Resolution:
 - X / Y axis 0.01 mm Servo Motor
 - Z axis 0.02 mm Servo Motor
- Rotation:
 - 0 to 360° (0.045°/step) Servo Motor
- Placement Accuracy: +/- 0.03 mm
- X-Y Repeatability: +/- 0.015 mm
- Placement Area
Feeder Rack front and back:
 - Max. 440 x 350 mm (w/o IC-Tray)
 - Max. 440 x 210 mm (with IC-Tray)Feeder Rack from all four sides:
 - Max. 370 x 350 mm (w/o IC-Tray)
 - Max. 370 x 210 mm (with IC-Tray)Feeder Rack front and back + conveyor:
 - Max. 435 x 350 mm (w/o IC-Tray)
 - Max. 435 x 160 mm (with IC-Tray)by optional PCB fixture
Standard PCB fixture:
 - For max. PCB size 270 x 350 mm (w/o IC-Tray)
- Programming:
 - Direct input
 - Vision teach-in
 - CAD Access (Option)
- Main Control: Industrial PC
- Power: 230 V / AC - 1800 W
- Pressure: 75 psi (5.5 bar)
- Machine Size: 1150 x 1000 x 1300 mm (L x W x H)
- Weight: 450 kg

We reserve the right to make changes without notice