

MODEL: SP600 / SP600L / SP1200 SEMI-AUTOMATIC STENCIL PRINTER



FEATURES

- Huge print area capability**
 The huge print area capability allows printing up to 1200mm x 400mm. It accepts standard SMT frame sizes from 350 x 350 mm to 1480 x 500 mm (for SP1200), or 350 x 350 mm to 838 x 736 mm (for SP600L)
- Vertical Separation of Stencil from PCB**
 4 corner ball screw system provides excellent separation control of stencil for high quality solder paste printing
- Programmable Speed Control for both squeegee movement and stencil separation**
- Dual Camera system for quick PCB alignment (optional)**

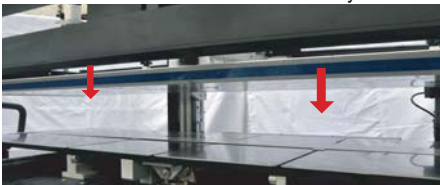
EASY STEPS

Step 1: Place the PCB board on the slidable working table

Step 2: By pressing IN button, the working table will move toward inside automatically



Step 3: By pressing DOWN button, the stencil screen will move downward automatically



Step 4: By using magnifying camera, the operator can adjust the X, Y, Theta alignment easily and precisely

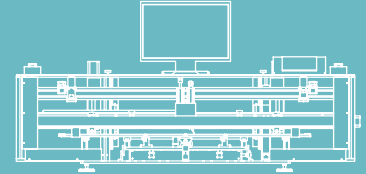


Step 5: By pressing START button, the squeegee will spread the solder paste steadily and automatically



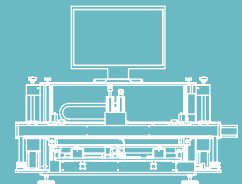
SPECIFICATION

SP1200



- Stencil Frame Size :
350 x 350mm to 1480 x 500mm
- Printing Area :
Max.1200mm x 400mm
- Board size :
Max.1250mm x 410mm
- X- and Y-Axes range: +/- 13 mm
- Theta rotation: +/- 3.5°
- Underside Clearance: 25 mm
- Z-axis range: 0 - 35 mm
- Registration Repeatability: +/- 0.01 mm
- Overall dimensions (L x W x H):
1719mm x 1006mm x 851mm
- Machine weight: 162kg

SP600 / SP600L



- Stencil Frame Size :
350 x 350mm to 838 x 500mm (SP600)
350 x 350mm to 838 x 736mm (SP600L)
- Printing Area :
Max.600mm x 400mm (SP600)
Max.600mm x 600mm (SP600L)
- Board size :
Max.650mm x 410mm (SP600)
Max.650mm x 650mm (SP600L)
- X- and Y-Axes range: +/- 13 mm
- Theta rotation: +/- 3.5°
- Underside Clearance: 25 mm
- Z-axis range: 0 - 35 mm
- Registration Repeatability: +/- 0.01 mm
- Overall dimensions (L x W x H):
1064mm x 1006mm x 851mm (SP600)
1100mm x 1100mm x 851mm (SP600L)
- Machine weight:
108kg (SP600)
135kg (SP600L)

We reserve the right to make changes without notice.



AUTOTRONIK-SMT GmbH
 Sulzbacher Str. 111
 92224 Amberg, Germany
 tel +49 (0) 9621-600 691
 fax +49 (0) 9621-600 692
 mail office@autotronik-smt.com
 www.autotronik.de